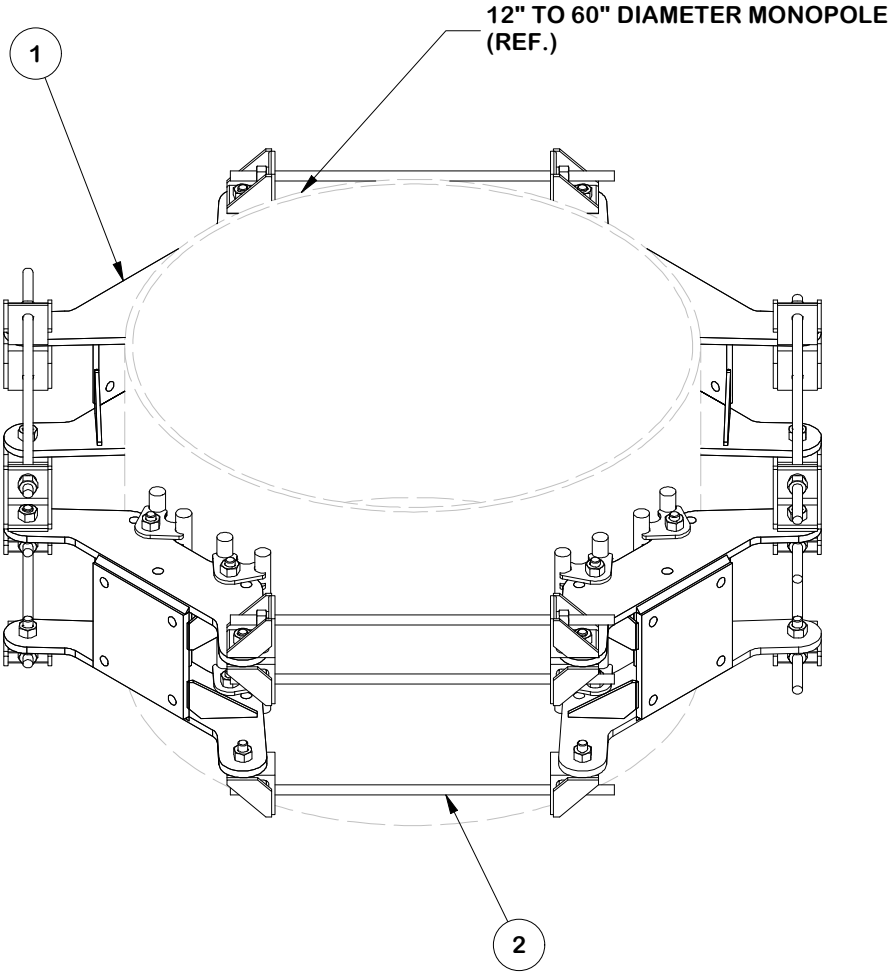
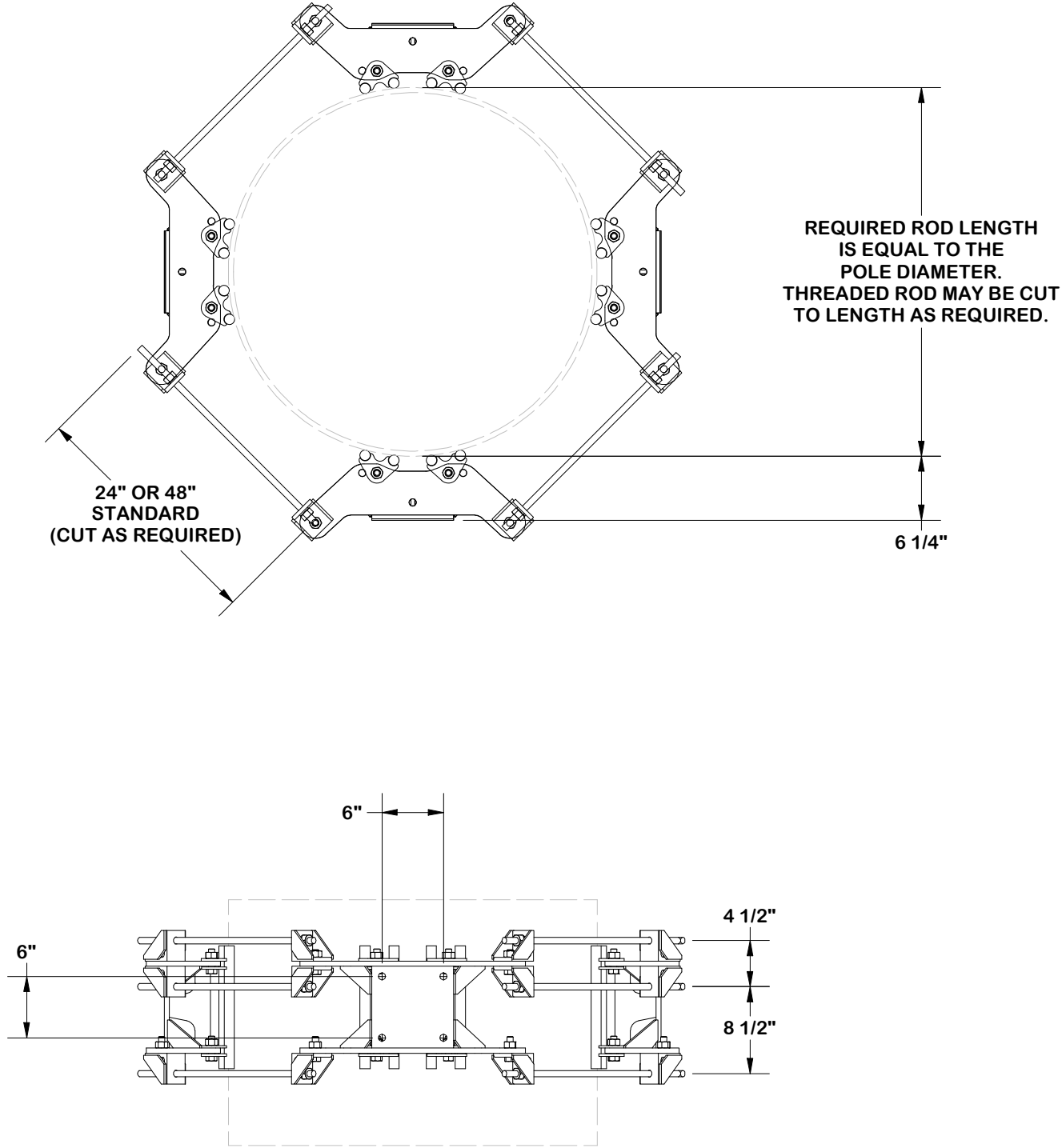


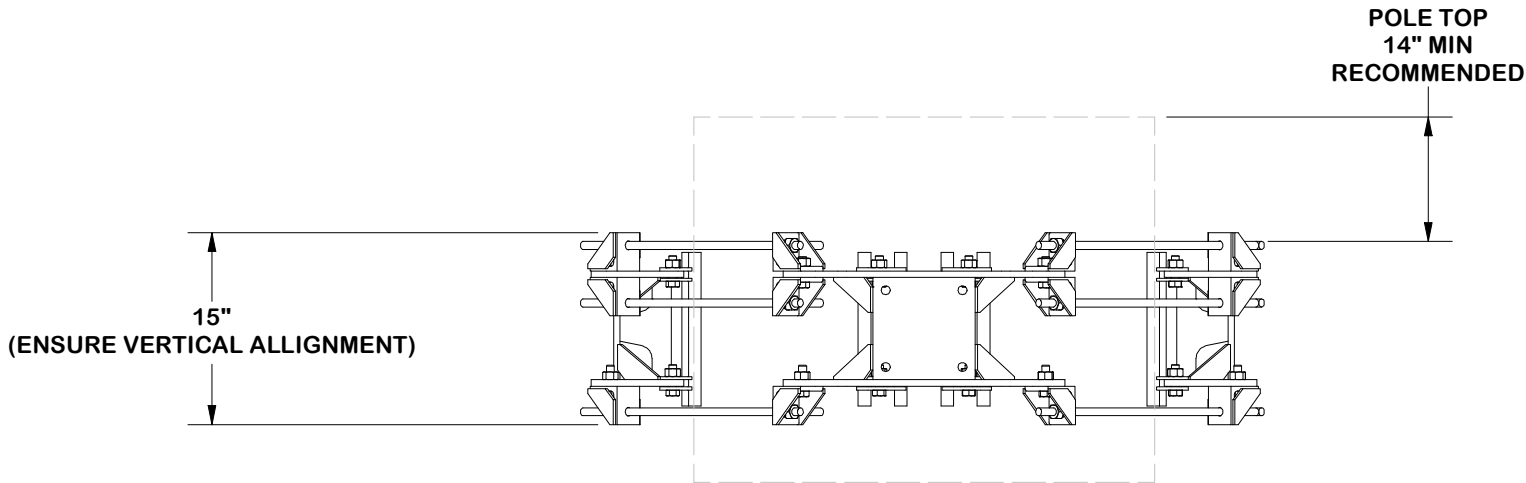
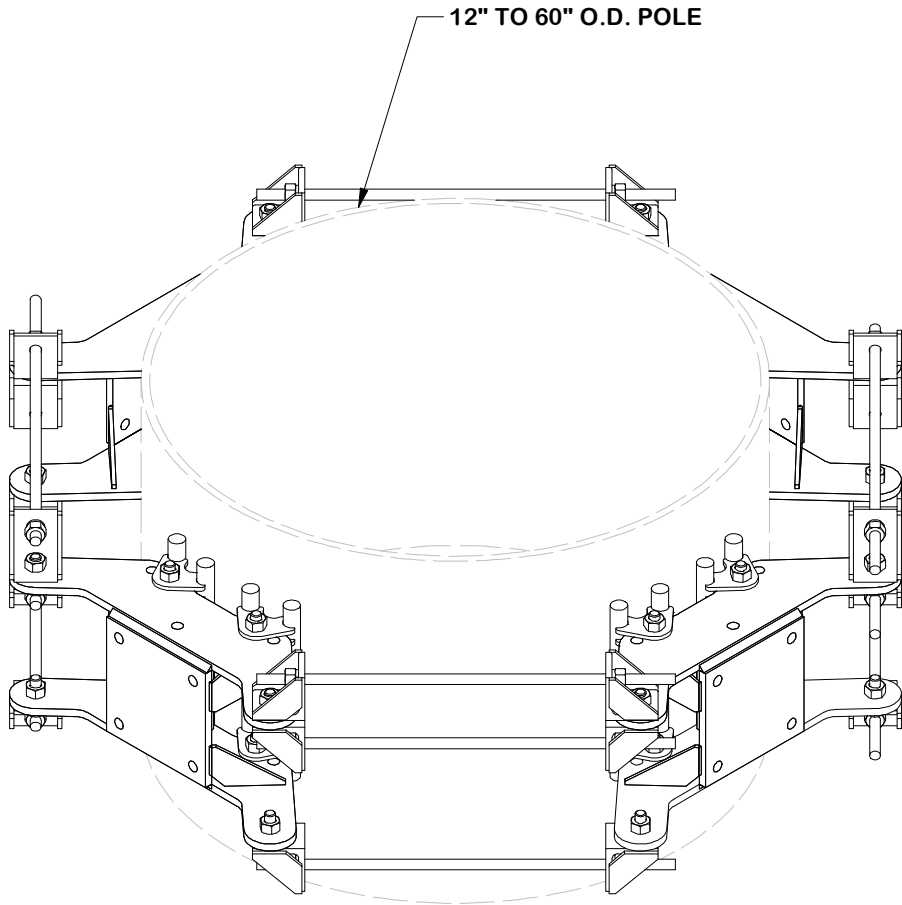
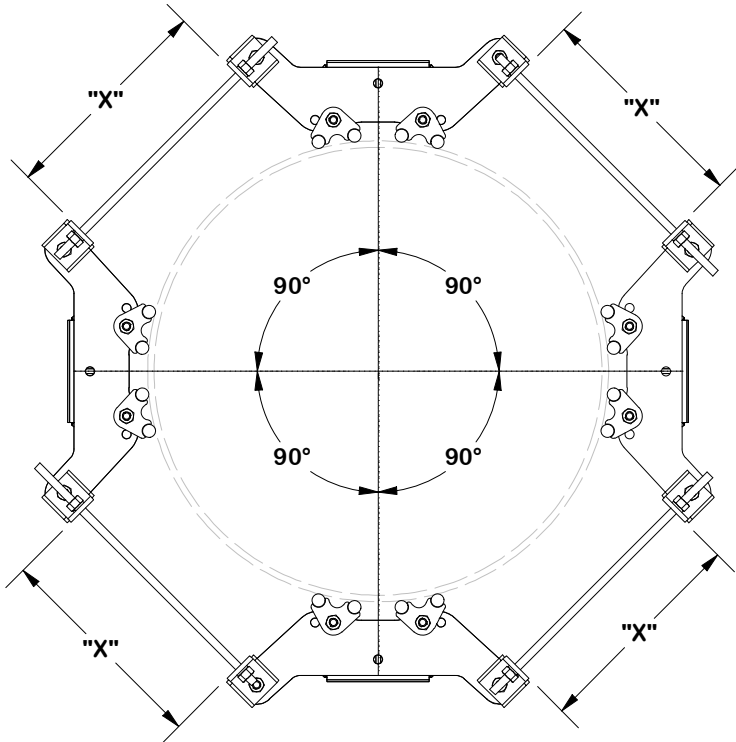
PARTS LIST						
ITEM	QTY	PART NO.	BOX NO.	PART DESCRIPTION	UNIT WT.	NET WT.
1	4	FLX-SDSS	P-FLX-SDSS	FLEXIBLE RING MOUNT SINGLE SECTOR ASSEMBLY	72.51	290.06
2	1	UQB4-HDWE	P-UQB4-HDWE	4-SIDED THREADED ROD KIT	79.01	79.01
					TOTAL WT. #	369.07



FINISH:  
HOT DIP GALVANIZED.

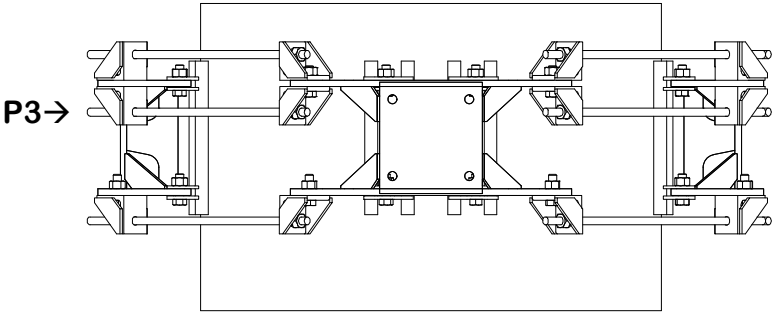
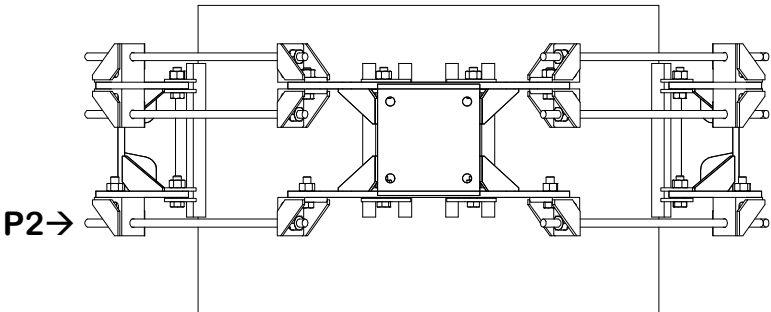
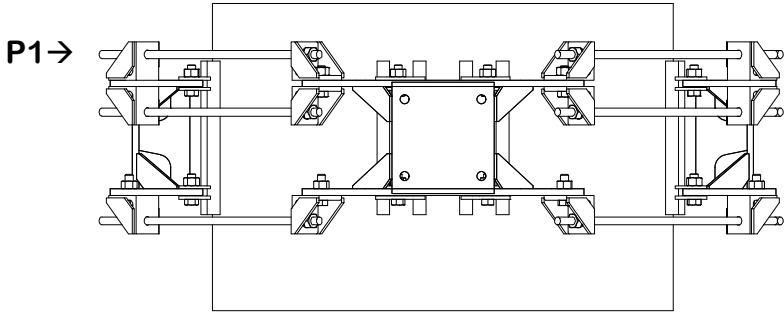
					TOLERANCE NOTES		DESCRIPTION			SITE PRO 1		Engineering Support Team: sp1engineering@valmont.com
					TOLERANCES ON DIMENSIONS, UNLESS OTHERWISE NOTED ARE: SAWED, SHEARED AND GAS CUT EDGES ( $\pm 0.030"$ ) DRILLED AND GAS CUT HOLES ( $\pm 0.030"$ ) - NO CONING OF HOLES LASER CUT EDGES AND HOLES ( $\pm 0.010"$ ) - NO CONING OF HOLES BENDS AND ANGLES ARE $\pm 1/2$ DEGREE ALL OTHER MACHINING ( $\pm 0.030"$ ) ALL OTHER ASSEMBLY ( $\pm 0.060"$ )		FLEXIBLE RING MOUNT 4-SIDED ASSEMBLY			A valmont COMPANY		
A	CHANGED KIT	NCS	NSP	11/12/2024	PATENT INFORMATION: WWW.SITEPRO1.COM/PATENTS		CPD NO.	DRAWN BY	ENG. APPROVAL	PART NO.		
REV	DESCRIPTION OF REVISIONS	CPD	BY	DATE	PROPRIETARY NOTE: THE DATA AND TECHNIQUES CONTAINED IN THIS DRAWING ARE PROPRIETARY INFORMATION OF VALMONT INDUSTRIES AND CONSIDERED A TRADE SECRET. ANY USE OR DISCLOSURE WITHOUT THE CONSENT OF VALMONT INDUSTRIES IS STRICTLY PROHIBITED.		CLASS	SUB	CHECKED BY	DWG. NO.		
REVISION HISTORY							87	02	SHOP	FLX4-SD		
										FLX4-SD		

NOTE:  
ENSURE EQUAL DISTANCE  
BETWEEN BRACKETS "X"  
AND AT 90° APART

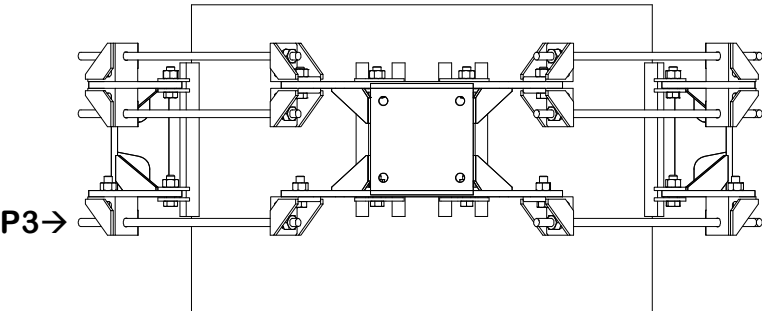
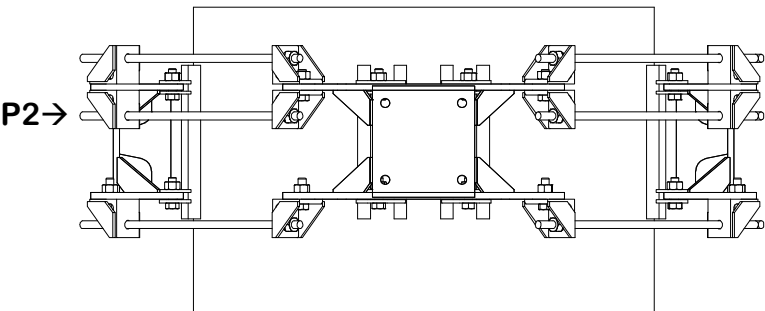
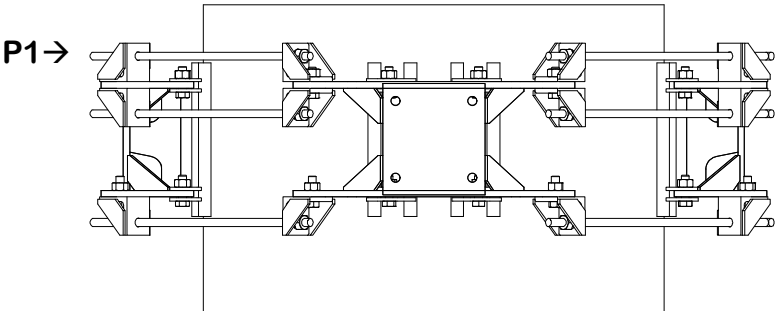


					<div>TOLERANCE NOTES</div> <div>TOLERANCES ON DIMENSIONS, UNLESS OTHERWISE NOTED ARE: SAWED, SHEARED AND GAS CUT EDGES (<math>\pm 0.030''</math>) DRILLED AND GAS CUT HOLES (<math>\pm 0.030''</math>) - NO CONING OF HOLES LASER CUT EDGES AND HOLES (<math>\pm 0.010''</math>) - NO CONING OF HOLES BENDS AND ANGLES ARE <math>\pm 1/2</math> DEGREE ALL OTHER MACHINING (<math>\pm 0.030''</math>) ALL OTHER ASSEMBLY (<math>\pm 0.060''</math>)</div>					<div>DESCRIPTION</div> <div>FLEXIBLE RING MOUNT 4-SIDED ASSEMBLY</div>					<div><div><div>SITE PRO</div><div>1</div></div><div>Engineering Support Team: sp1engineering@valmont.com</div><div>A valmont COMPANY</div></div>							
A		CHANGED KIT			NCS	NSP	11/12/2024		PATENT INFORMATION: WWW.SITEPRO1.COM/PATENTS					CPD NO. NCS		DRAWN BY NSP 5/23/2024		ENG. APPROVAL BMC 12/6/2024		PART NO. FLX4-SD		2 OF 5 PAGE
REV		DESCRIPTION OF REVISIONS			CPD	BY	DATE		PROPRIETARY NOTE: THE DATA AND TECHNIQUES CONTAINED IN THIS DRAWING ARE PROPRIETARY INFORMATION OF VALMONT INDUSTRIES AND CONSIDERED A TRADE SECRET. ANY USE OR DISCLOSURE WITHOUT THE CONSENT OF VALMONT INDUSTRIES IS STRICTLY PROHIBITED.					CLASS 87	SUB 02	DRAWING USAGE SHOP		CHECKED BY CSL 12/6/2024		DWG. NO. FLX4-SD		
REVISION HISTORY																						

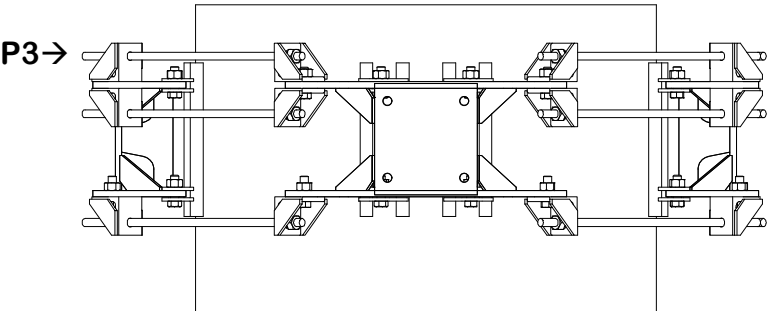
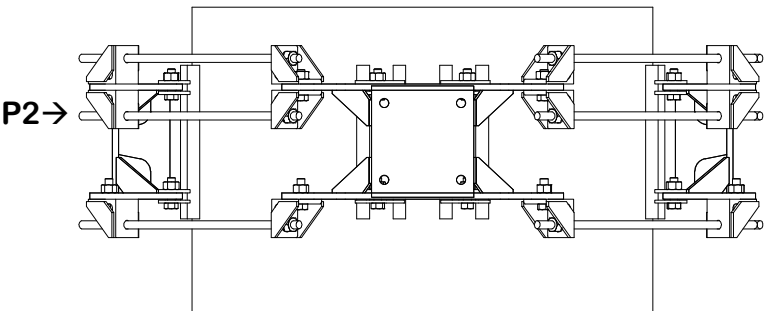
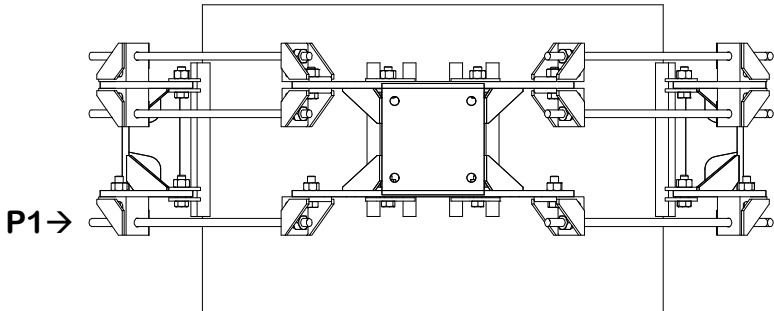
INSTALL ORDER




INITIAL TIGHTENING



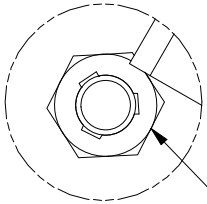
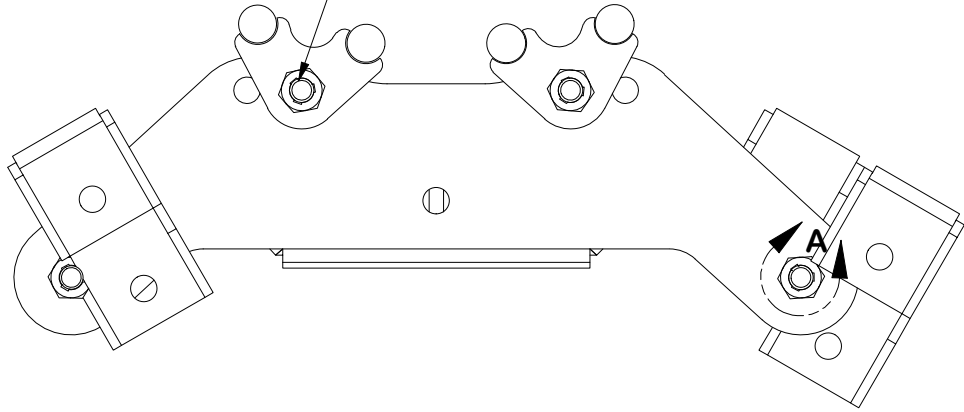
FINAL TIGHTENING



					<div>TOLERANCE NOTES</div> <div>TOLERANCES ON DIMENSIONS, UNLESS OTHERWISE NOTED ARE: SAWED, SHEARED AND GAS CUT EDGES (<math>\pm 0.030''</math>) DRILLED AND GAS CUT HOLES (<math>\pm 0.030''</math>) - NO CONING OF HOLES LASER CUT EDGES AND HOLES (<math>\pm 0.010''</math>) - NO CONING OF HOLES BENDS AND ANGLES ARE <math>\pm 1/2</math> DEGREE ALL OTHER MACHINING (<math>\pm 0.030''</math>) ALL OTHER ASSEMBLY (<math>\pm 0.060''</math>)</div>					<div>DESCRIPTION</div> <div>FLEXIBLE RING MOUNT 4-SIDED ASSEMBLY</div>					<div><div><div>SITE PRO</div><div>1</div></div><div>Engineering Support Team: sp1engineering@valmont.com</div></div> <div>A valmont  COMPANY</div>				
					CPD NO. NCS		DRAWN BY NSP 5/23/2024		ENG. APPROVAL BMC 12/6/2024		PART NO. FLX4-SD			PAGE 3 OF 5					
REV		DESCRIPTION OF REVISIONS			CPD		BY		DATE		DWG. NO. FLX4-SD								
REVISION HISTORY					PATENT INFORMATION: WWW.SITEPRO1.COM/PATENTS					CLASS 87		SUB 02				DRAWING USAGE SHOP		CHECKED BY CSL 12/6/2024	
					PROPRIETARY NOTE: THE DATA AND TECHNIQUES CONTAINED IN THIS DRAWING ARE PROPRIETARY INFORMATION OF VALMONT INDUSTRIES AND CONSIDERED A TRADE SECRET. ANY USE OR DISCLOSURE WITHOUT THE CONSENT OF VALMONT INDUSTRIES IS STRICTLY PROHIBITED.														

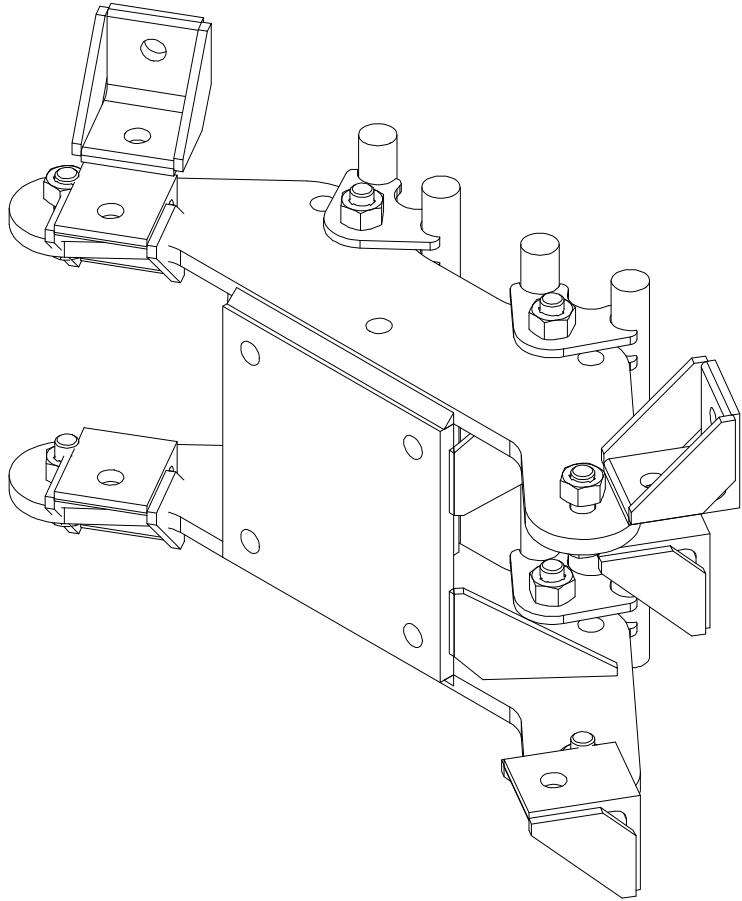
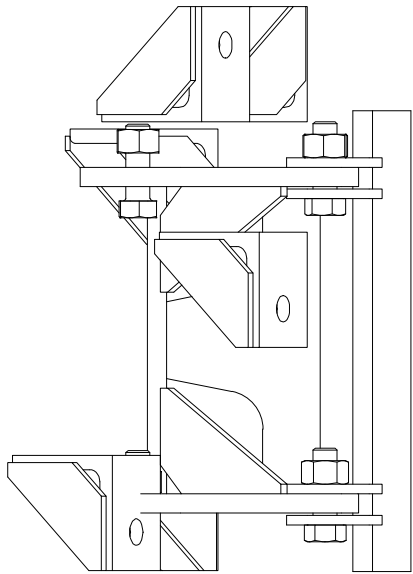
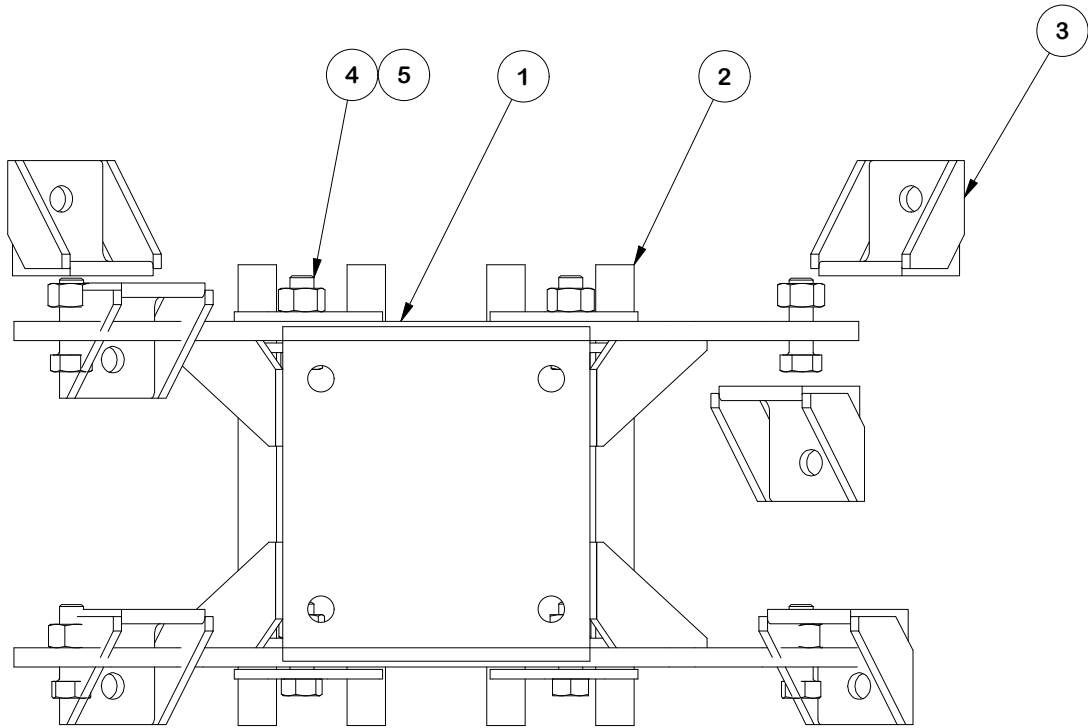
PARTS LIST					
ITEM	QTY	PART NO.	PART DESCRIPTION	UNIT WT.	NET WT.
1	1	X-CR-SDW	FLEXIBLE RING MOUNT	42.23	42.23
2	2	X-CR-PW12	12" CLAMP RING PIVOT WELDMENT	6.93	13.85
3	6	X-CR-AGW	ANGLE ON WELDMENT	2.20	13.18
4	8	G5802	5/8" x 2" HDG HEX BOLT GR5	0.27	2.16
5	8	G58TRI-LNUT	5/8" HDG HEAVY 2H TRI-LOCK NUT	0.14	1.10
TOTAL WT. #					72.51

NOTE:  
CLAMP RING PIVOT WELDMENT SHOULD BE  
ASSEMBLED IN THE INNER HOLE OF WELDMENT



NOTE:  
FOR TRI-LOCKNUT INSTALLATION, ENSURE GROOVED SIDE  
IS ORIENTED AWAY FROM BOLT HEAD

DETAIL A



FINISH:  
HOT DIP GALVANIZED.

TOLERANCE NOTES

TOLERANCES ON DIMENSIONS, UNLESS OTHERWISE NOTED ARE:  
SAWED, SHEARED AND GAS CUT EDGES ( $\pm 0.030"$ )  
DRILLED AND GAS CUT HOLES ( $\pm 0.030"$ ) - NO CONING OF HOLES  
LASER CUT EDGES AND HOLES ( $\pm 0.010"$ ) - NO CONING OF HOLES  
BENDS AND ANGLES ARE  $\pm 1/2$  DEGREE  
ALL OTHER MACHINING ( $\pm 0.030"$ )  
ALL OTHER ASSEMBLY ( $\pm 0.060"$ )

PATENT INFORMATION: WWW.SITEPRO1.COM/PATENTS

PROPRIETARY NOTE:  
THE DATA AND TECHNIQUES CONTAINED IN THIS DRAWING ARE PROPRIETARY INFORMATION OF VALMONT INDUSTRIES AND CONSIDERED A TRADE SECRET. ANY USE OR DISCLOSURE WITHOUT THE CONSENT OF VALMONT INDUSTRIES IS STRICTLY PROHIBITED.

DESCRIPTION  
FLEXIBLE RING MOUNT  
4-SIDED ASSEMBLY

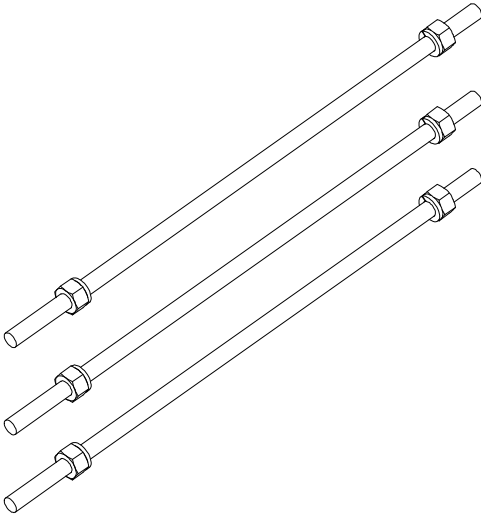
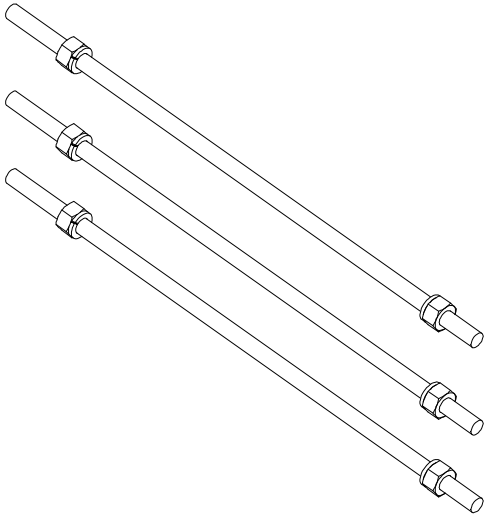
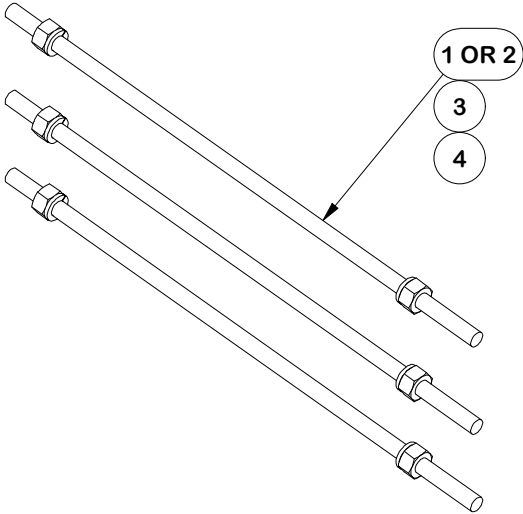
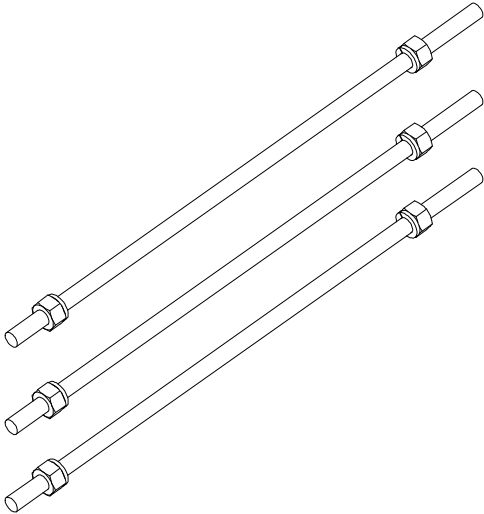
CPD NO. NCS		DRAWN BY NSP 5/23/2024		ENG. APPROVAL BMC 12/6/2024	
CLASS 87	SUB 02	DRAWING USAGE SHOP		CHECKED BY CSL	12/6/2024



Engineering  
Support Team:  
sp1engineering@valmont.com

PART NO. FLX-SDSS	PAGE 4 OF 5
DWG. NO. FLX4-SD	

PARTS LIST					
ITEM	QTY	PART NO.	PART DESCRIPTION	UNIT WT.	NET WT.
1	12	G58R-48	5/8" x 48" THREADED ROD (HDG.)	4.18	50.18
2	12	G58R-24	5/8" x 24" THREADED ROD (HDG.)	2.09	25.09
3	24	G58LW	5/8" HDG LOCKWASHER	0.03	0.63
4	24	G58NUT	5/8" HDG HEAVY 2H HEX NUT	0.13	3.12
TOTAL WT. #					



FINISH:  
HOT DIP GALVANIZED.

	<div>TOLERANCE NOTES</div> <div>TOLERANCES ON DIMENSIONS, UNLESS OTHERWISE NOTED ARE: SAWED, SHEARED AND GAS CUT EDGES (<math>\pm 0.030''</math>) DRILLED AND GAS CUT HOLES (<math>\pm 0.030''</math>) - NO CONING OF HOLES LASER CUT EDGES AND HOLES (<math>\pm 0.010''</math>) - NO CONING OF HOLES BENDS AND ANGLES ARE <math>\pm 1/2</math> DEGREE ALL OTHER MACHINING (<math>\pm 0.030''</math>) ALL OTHER ASSEMBLY (<math>\pm 0.060''</math>)</div>			<div>DESCRIPTION</div> <div>FLEXIBLE RING MOUNT 4-SIDED ASSEMBLY</div>			<div><div><div>SITE PRO 1</div><div>A valmont COMPANY</div></div><div>Engineering Support Team: sp1engineering@valmont.com</div></div>	
	PATENT INFORMATION: WWW.SITEPRO1.COM/PATENTS			CPD NO. NCS	DRAWN BY NSP 5/23/2024	ENG. APPROVAL BMC 12/6/2024	PART NO. UQB4-HDWE	
	PROPRIETARY NOTE: THE DATA AND TECHNIQUES CONTAINED IN THIS DRAWING ARE PROPRIETARY INFORMATION OF VALMONT INDUSTRIES AND CONSIDERED A TRADE SECRET. ANY USE OR DISCLOSURE WITHOUT THE CONSENT OF VALMONT INDUSTRIES IS STRICTLY PROHIBITED.			CLASS 87	SUB 02	DRAWING USAGE SHOP	CHECKED BY CSL 12/6/2024	DWG. NO. FLX4-SD

PAGE 5 OF 5